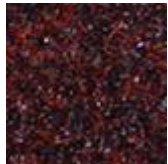


## Overlander / Senator - Modular Carpet Tile

A dense velour style carpet tile designed for interior areas.

## Charles van Gelder Importers, Inc.

136 North Cass Street  
 Adairsville, GA 30103  
 Phone: 770.773.7109  
 Toll Free: 1.866.284.6287  
 Fax: 770.773.7120



Burnt  
Bracken



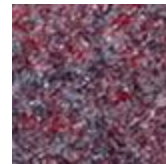
Forest  
Spruce



Winter Holly



Broken Ice



Mountain  
Mist



Heather  
Moors



Summer  
Pine



Lava Lake



Silver Sand



Stormy Sky



Oak Charcoal



Pebble Stone



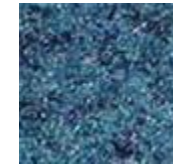
Autumn Rust



Oasis Palm



Desert Rose



Bluebell Valley

### Overlander / Senator Specifications

\* Note - All weights and thickness quoted + or - 10%

Construction	Non woven dense velour
Pile Fiber	50% Polypropylene, 20% Nylon and 30% Polyester
Face Weight	28 oz. per s/y
Fire Rating	Passes ASTM-E648 (Class I product)
Backing	Bitumen
Tile Size	19.69" x 19.69"
Wear Warranty	7 years on flat surfaces
Spike-Resistant (Excludes pivot areas)	3 years on flat surfaces
Electrostatic Propensity	Permanently anti-static

