

Olympian - Modular Carpet Tile

The ever popular cobble (berber) construction comes to life in tile form with this lightweight configuration. A junior version of our Champion tile.

Charles van Gelder Importers, Inc.

136 North Cass Street
 Adairsville, GA 30103
 Phone: 770.773.7109
 Toll Free: 1.866.284.6287
 Fax: 770.773.7120



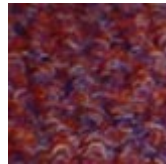
Ash



Stormy Blue



Charcoal



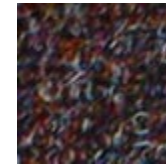
Terra Cotta



Lichen



Sand



Terrazzo



Earth

Olympian Specifications

* Note - All weights and thickness quoted + or - 10%

Construction	Non woven cobble (berber) tile
Pile Fiber	100% solution dyed polypropylene
Face Weight	28 oz. per s/y
Total Weight	145 oz.
Backing	Bitumen
Tile Size	19.69" x 19.69"
Wear Warranty	7 years on flat surfaces
Spike-Resistant (Excludes pivot areas)	3 years on flat surfaces
Electrostatic Propensity	Permanently anti-static



BS 476 PT7
 Radiant Panel Test