

## Jaguar - Broadloom Entrance Matting

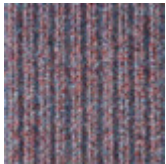
A double ribbed product designed for areas where a hard wearing, easily maintained and low cost flooring is required.

## Charles van Gelder Importers, Inc.

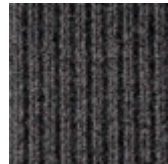
136 North Cass Street  
 Adairsville, GA 30103  
 Phone: 770.773.7109  
 Toll Free: 1.866.284.6287  
 Fax: 770.773.7120



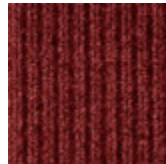
Cobalt



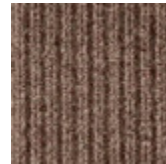
Jupiter



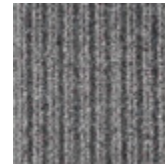
Charcoal



Red



Wild Rice



Silver Grey

### Jaguar Specifications

\* Note - All weights and thickness quoted + or - 10%

Construction	Non woven double ribbed
Pile Fiber	100% solution dyed polypropylene
Face Weight	38 oz. per s/y
Backing	High density latex "Safety Track" backing
Width	6'6"
Roll Length	Approximately 80'
Wear Warranty	7 years on flat surfaces
Spike-Resistant (Excludes pivot areas)	3 years on flat surfaces
Electrostatic Propensity	Permanently anti-static



BS 476 PT7  
 Radiant Panel Test